

Syft Explorer

 Syft™
Simply. Faster.

Unleashing **Mobile**
Real-Time Trace
Gas Analysis



Syft Explorer provides everything needed to make critical decisions quickly — anywhere on-site

The Syft Explorer offers real-time and selective analysis, presented in a mobile solution. This allows investigation of contamination sites and short-term chemical leaks for critical concentration levels. Detect crucial volatile emissions at their source such as airborne molecular contaminants. Syft Explorer comes with built-in data acquisition and processing capabilities, facilitating quick decision-making from sample measurements. It provides high resolution data collection at locations of interest without the need for chromatography or sample preparation.



- Highly selective and quantitative
- Easy to operate and interpret data
- One configuration for multiple, diverse analyses
- Trace level multi-analyte detection sensitivity
- No chromatography or sample preparation required
- Extensive compound library that can be used to create customized analyte targeting methods.

A complete solution for versatile, point of interest mobile monitoring

Syft Explorer is an all-in-one solution designed for environmental, indoor air and semiconductor applications. It delivers high sensitivity, exceptional performance stability, and highly reproducible data. With its mobile functionality, it enables rapid, selective, and reliable analysis of contaminants at ambient air sites.

Syft Explorer offers a unified configuration for analyzing volatile organic compounds and inorganics with a single method or between multiple methods. It enables continuous, on-line analysis and provides a dedicated user-friendly interface for instrument control, status information and data visualization.

Selective Quantitation of Chemically Diverse Compounds

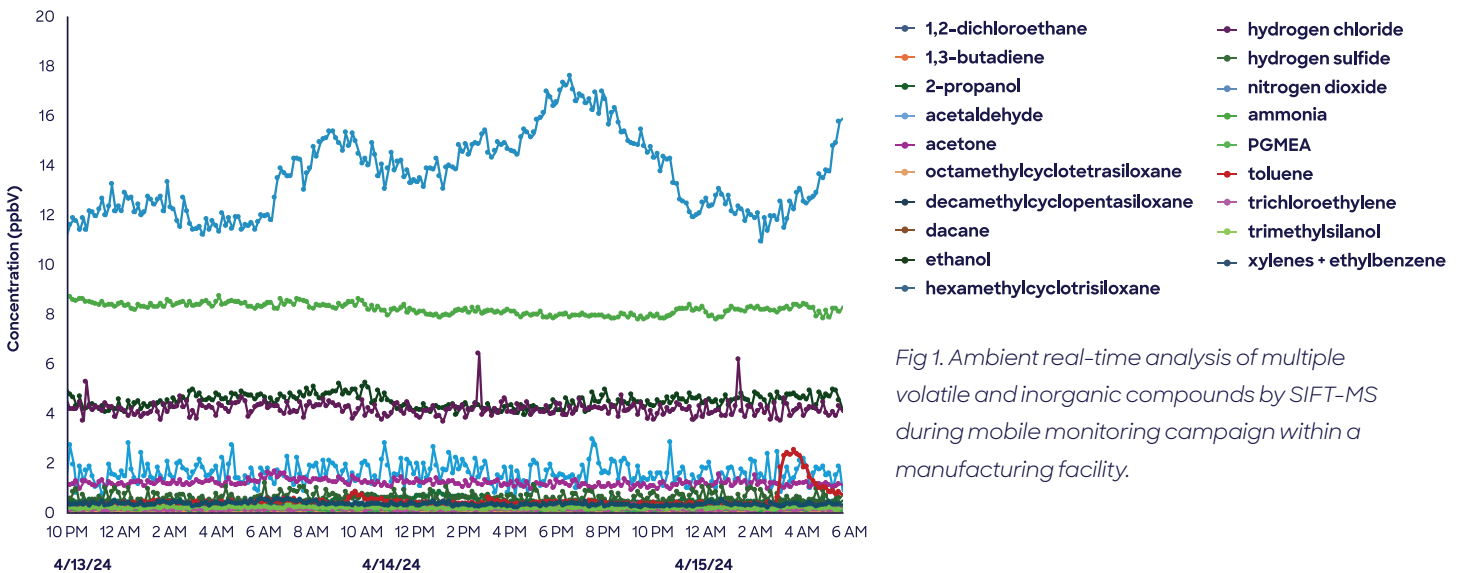


Fig 1. Ambient real-time analysis of multiple volatile and inorganic compounds by SIFT-MS during mobile monitoring campaign within a manufacturing facility.

Syft Explorer detects contamination events at their source

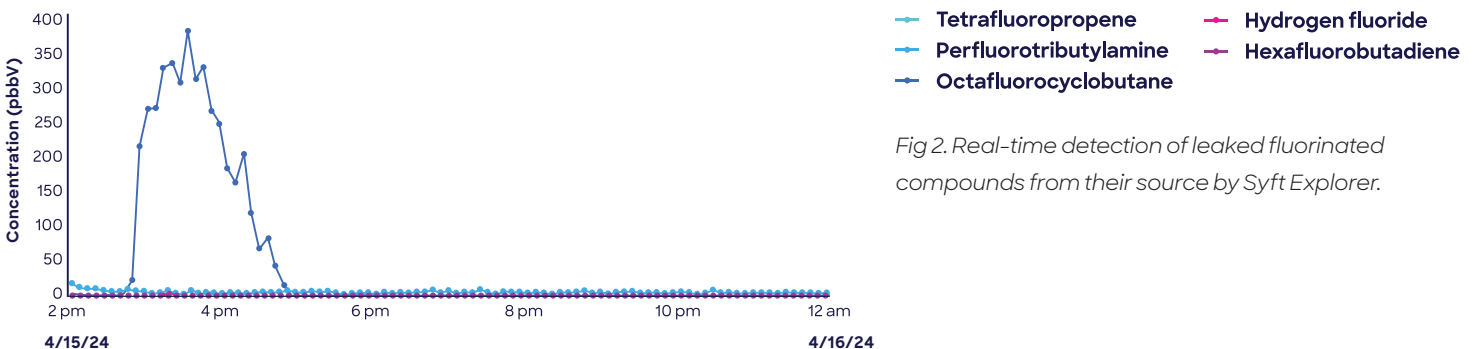


Fig 2. Real-time detection of leaked fluorinated compounds from their source by Syft Explorer.

Features:

- Onboard clean dry air, nitrogen or helium cylinders
- Intelligent, automatic power management
- Comprehensive braking system, bumpers, sample line storage and power cord storage ensuring easy movement around sampling sites
- Electrically designed to be compatible with Asia, USA, EU, and Oceania regions
- Battery lifetime of 1.5 hours

Syft AMC Explorer

The **Syft AMC Explorer** is designed specifically for semiconductor clients and includes a light tower and Emergency Off (EMO) function.

Additional safety features on request include seismic anchors, exhaust filters, interlocks, and VCR fittings.





SyftExplore software supports your workflow from scheduling to analysis

The purpose-built SyftExplore provides a complete software package for mobile measurements. A comprehensive scheduler allows development of configurable analyses, while the Data Viewer effectively displays quantitative results. Instrument health metrics are displayed for easy troubleshooting.

Dashboard

An instrument health overview provides extensive monitoring of instrument parameters, enabled with automatic logging of abnormal alarm states. Steps and results of the daily Performance Tune procedure are recorded automatically.

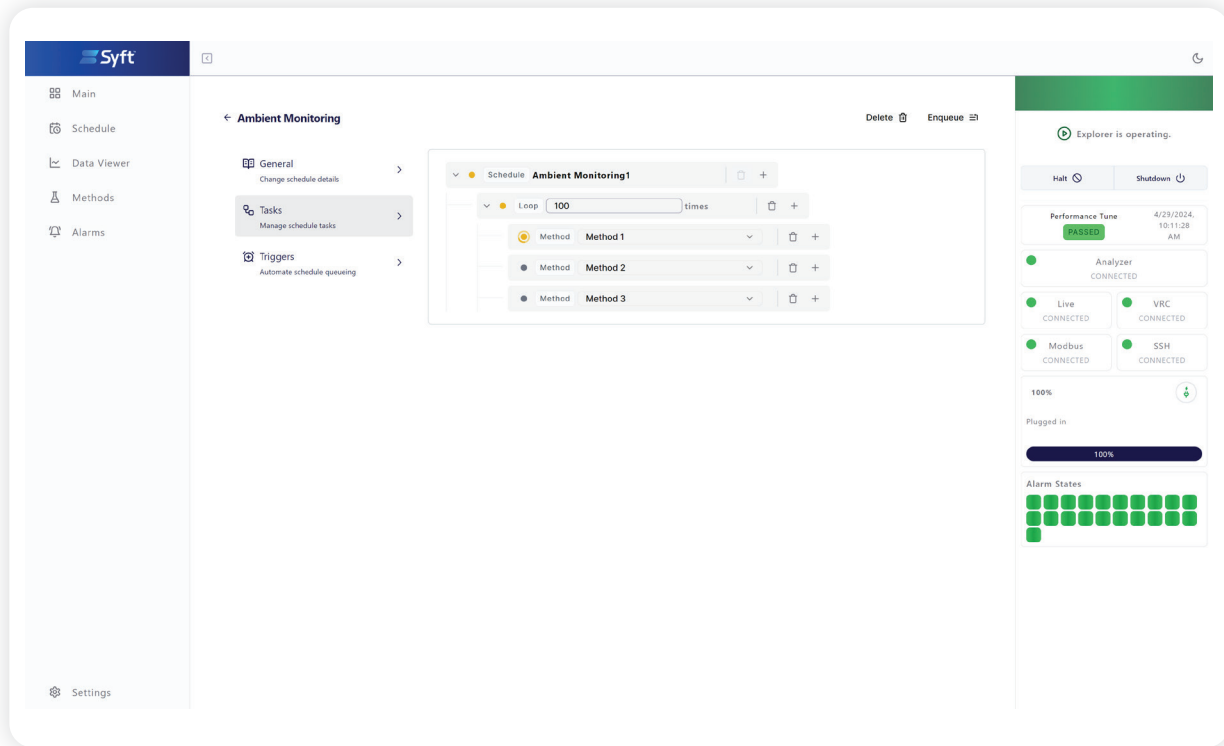
The dashboard interface includes a sidebar with navigation options: Main, Schedule, Data Viewer, Methods, Alarms, and Settings. The main content area is divided into several panels:

- Scan Chart:** A line graph showing concentration (ppbv) over time. The y-axis ranges from 0 to 300 ppbv, and the x-axis shows time from 15:00:48 to 15:00:56. Two data series are plotted: a green line fluctuating between approximately 250 and 275 ppbv, and a blue line remaining stable around 100 ppbv.
- Recent Scans Table:** A table listing scan details.

Scan ID	Method	Status	Start Time	See Details
exec_01HWFF569MADGR2MP030QSVVD	Method_1	PENDING	2024-04-30 15:01:02	See Details
exec_01HWFF569MADGR2MP030QSVVD	Method_3	Completed	2024-04-30 15:00:47	See Details
exec_01HWFF69371VFX2W03JAKKJVD48	Method_2	Completed	2024-04-30 15:00:33	See Details
exec_01HWFF6ASVNZW4KV33205M5SE	Method_1	Completed	2024-04-30 15:00:19	See Details
exec_01HWFF3X8XK2CC27B42NWXEV	Method_3	Completed	2024-04-30 15:00:05	See Details
exec_01HWFF38448H1W0D4EQ1F3M7JH	Method_2	Completed	2024-04-30 14:59:50	See Details
exec_01HWFF333805W0337G0P525XV	Method_1	Completed	2024-04-30 14:59:36	See Details
exec_01HWFF2K58A01M8HXYSJWENSGB	Method_3	Completed	2024-04-30 14:59:22	See Details
exec_01HWFF2ASIMEAWT78CNIJAY088	Method_2	Completed	2024-04-30 14:59:07	See Details
- Method 1 Details:** Shows 'Sample (PSM) phase' as '4/30/2024, 3:01:02 PM' and a 'See Details' link.
- Queue:** Displays a 'Queue' with one item: 'Ambient Monitoring' (Added: 4/30/2024, 2:58:48 PM).
- System Status:**
 - Explorer is operating.
 - Halt and Shutdown buttons.
 - Performance Tune: 4/29/2024, 10:11:28 AM, PASSED.
 - Analyzer: CONNECTED.
 - Live: CONNECTED, VRC: CONNECTED.
 - Modbus: CONNECTED, SSH: CONNECTED.
 - 100% Plugged in.
 - Alarm States: A grid of 12 green squares.

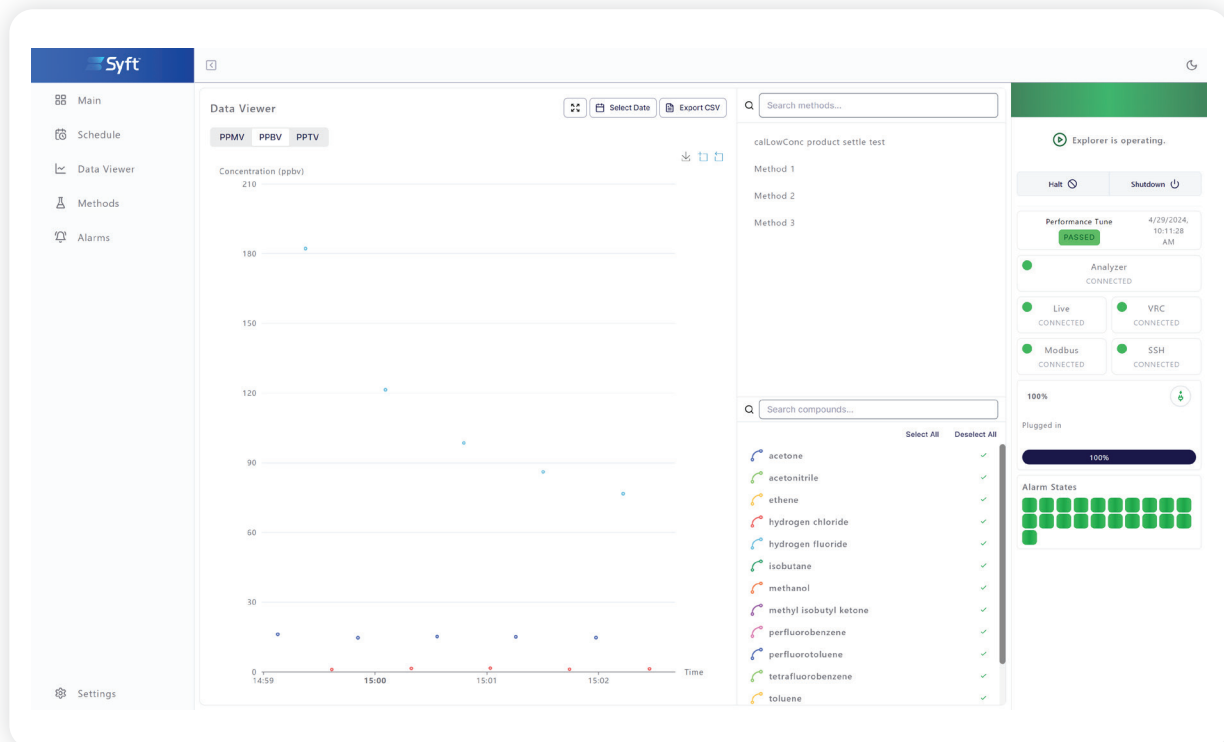
Scheduler

SyftExplore software allows you to build, import and manage SIFT-MS methods with an intuitive user interface. These methods can be combined into customized schedules, with capability to repeat sequences or the same method as desired. Instrument Performance Tuning and other tasks can be enabled automatically.



Data Viewer

The user interface delivers schedule configuration and data processing, expanding to the ability to export data as CSV files for further processing in other programs.







Simply. Faster.

Syft Technologies Limited
68 St. Asaph Street
Christchurch Central,
Christchurch, New Zealand

Phone: +64 3 338 6701
Fax: +64 3 338 6704
Email: info@syft.com
Website: syft.com



Copyright © 2024 Syft Technologies Ltd
BR01_No.7_May2024_Rev1